



ALBANY THEATRE TECH SPEC (UPDATED 17/12/2009)

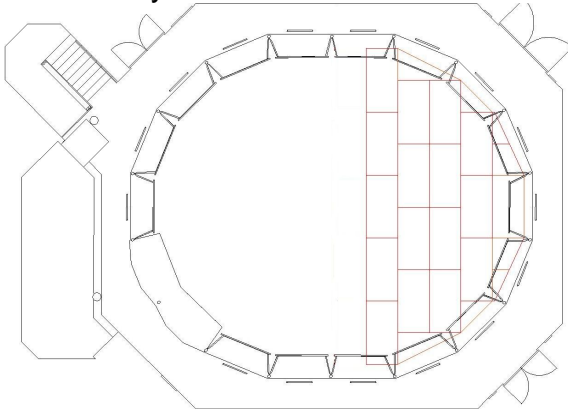
Dimensions

At highest centre point 6m (Curved Surface)
Continuous usable height 4m
Maximum floor space (without staging 12.5m x 14.8m)
Doors to theatre 2.4m wide x 2m high
All entrances accessible from backstage corridors.

Stage

Standard end on stage made up of *Steeldeck* blocks 2.4m x 1.2m (8' x 4'):
Stage Depth: 6.1m at deepest point. Stage Width: 12.2m at widest point
Stage Height: 400mm

Standard layout:



Other Stage layouts are available on request and at additional cost, please ask for further information if necessary.

Red velvet curtain track.
Selection of soft and hard masking is available.
Black *Harlequin* studio dance floor is available.
Remote controlled blind in auditorium roof for natural light.
The auditorium is air-conditioned.

Capacity

250 for a seated performance (dependent on staging/auditorium layout)
500 for a standing performance (dependent on staging/auditorium layout)
Cabaret style or rowed seating. (Sandler seating, black café tables, five patrons per table)

Stage Management

DSM position at LX Desk
Ring Intercom throughout
Show relay to Dressing Rooms

Fiona Greenhill
Head of Production
Tel: 020 8692 0231 ext 230
Fiona.greenhill@thealbany.org.uk

Lighting

MA GrandMA2 ultra-light Console.

ETC Sensor Dimmers 2.5K per channel (142 ways)

2 x independent channels. 125amp 3 phase supply is available.

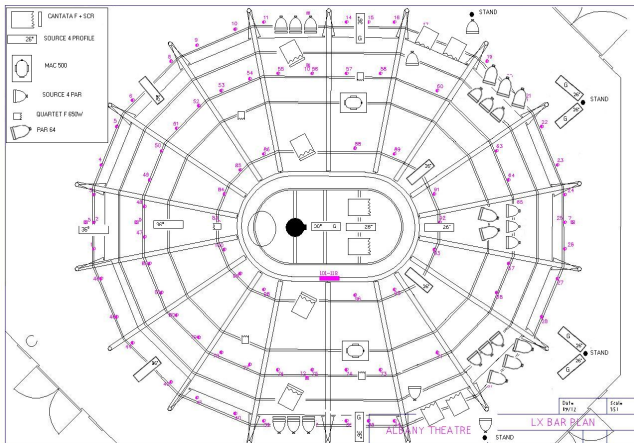
Large selection of generic theatre lighting (please see separate tech spec)

Easy Access to lighting bridges via steps in dimmer room

Internally wired bars in circumference at grid level

Movable Central Truss on Hand Winch

Example lighting plan:



Sound

Yamaha M7 Digital Desk, Meyer M1A controllers, MC 2 450w Amplifiers

Meyer 650P Powered Sub Bass

(Please see separate tech spec for detailed breakdown of stock)

NB: A single operator cannot control the Lighting and Sound Desks

Dressing Rooms

2 Dressing Rooms both with shower and WC (Separate accessible facilities are available FOH), iron and ironing board.

Rehearsal piano available on request.

Band/Green Room available on request

Laundry Room: washing machine & tumble dryer

Access

Get in through goods yard at rear of venue, access from **Octavius Street, SE8 4LW**

Single lorry load in (max 30' truck) Flat floor access to stage through workshop

Plans & Tech Specs

Plans (CAD, JPEG and hard copies) and detailed technical specifications available on request from Head of Production or from our website:

<http://www.thealbany.org.uk/pages/theatre.html>

Fiona Greenhill

Head of Production

Tel: 020 8692 0231 ext 230

Fiona.greenhill@thealbany.org.uk